

## 2688T Series

**THOMAS**  
by Gardner Denver

### FEATURES

- > Maximum operating pressure up to 175 psig (12 bar)
- > Corrosion resistant wetted parts
- > Oil-less operation
- > Air filter/capacitor assembled
- > Lightweight aluminium die-cast components
- > Dynamically balanced
- > Permanently lubricated bearings
- > Patented monolithic head
- > Motor thermally protected
- > Stainless steel valves
- > Twin 9 blade internal cooling fans
- > Reliable WOB-L<sup>®</sup> piston technology
- > Agency approved (UL or TUV)
- > RoHS compliant
- > Easily serviced

### TYPICAL APPLICATIONS

- > Mass Spectrometers
- > Nitrogen Generators
- > Beverage Dispensing

### BASE MODEL

2688TE44/38  
(115/60/1)

2688TGHI44/38  
(230/60/1 & 220-240/50/1)



2688T



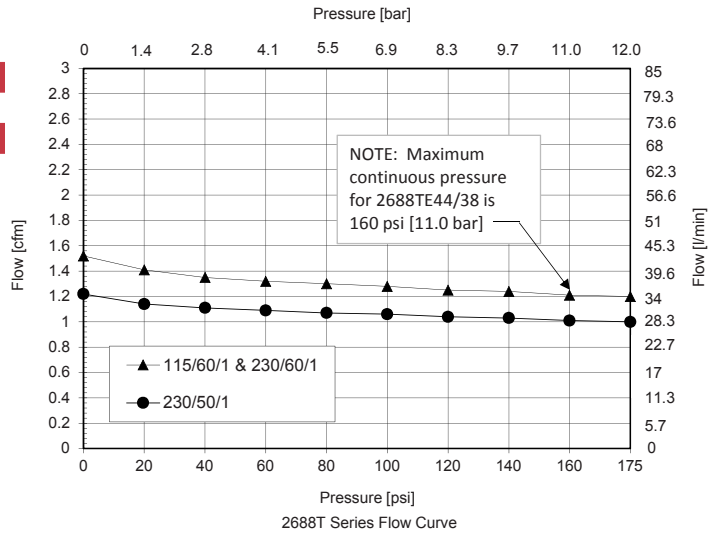
WOB-L<sup>®</sup>

# 2688T Series

Flow	1.52 cfm (43.0 l/min)
Max. pressure	up to 175 psig (12.0 bar)
Max. vacuum	N/A Pressure Only



2688T



## PERFORMANCE DATA

Model Number	2688TE44/38	2688TGH144/38
Head Configuration	2 Stage Pressure	2 Stage Pressure
Stroke	0.44" (11.2mm) / .38" (9.7mm)	0.44 in. (11.2mm) / .38" (9.7mm)
Nominal voltage input	115V 60Hz	230V 60Hz & 220-240V 50Hz
Max. open air flow	1.52 cfm (43.0 l/min)	1.52 cfm (43.0 l/min) & 1.22 cfm (34.5 l/min)
Max. rated operating pressure	160 psig (11.0 bar)	175 psig (12.0 bar)
Current at rated pressure	4.7A	2.0A & 2.6A
Power at rated pressure	465W	440W & 480W
Max. pressure restart	Not applicable	Not applicable
Max. vacuum	Not applicable	Not applicable
Max. vacuum restart	Not applicable	Not applicable

## ELECTRICAL DATA

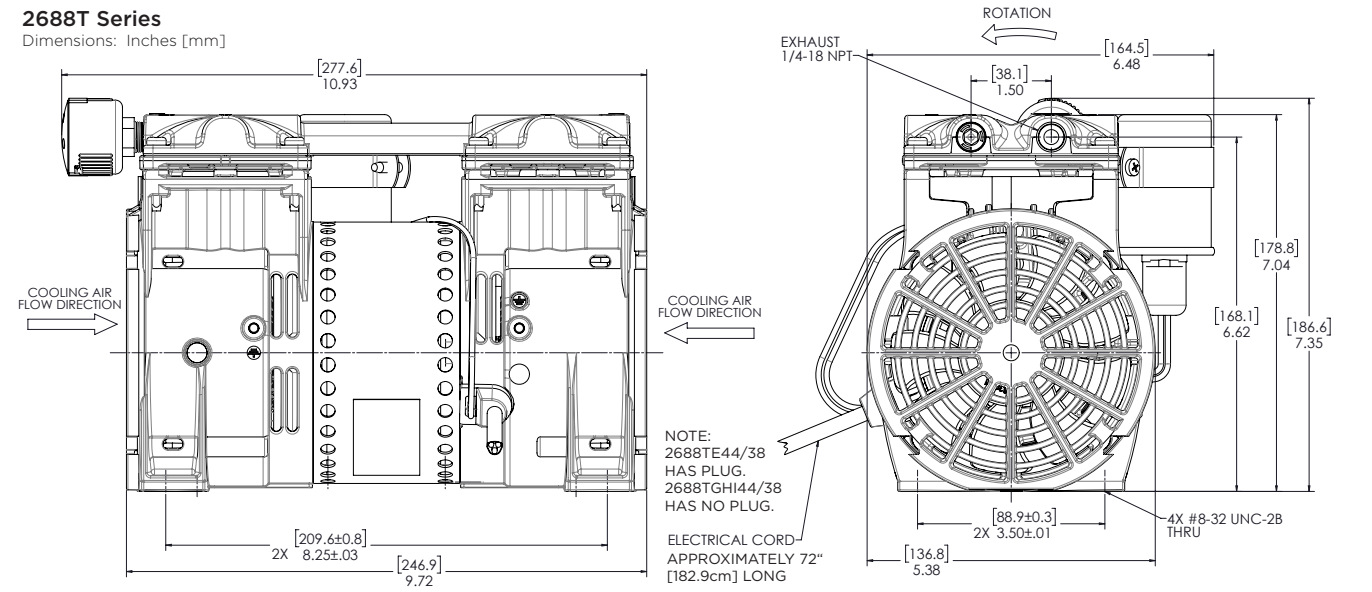
Motor type [Capacitor value]	P. S. C. [20 µF]	P. S. C. [12.5 µF]
Motor insulation class	B	B
Thermal protection [Open temperature]	Yes [145°C ±5°C]	Yes [120°C ±5°C]
Line lead wire color, gauge	Cord with NEMA 5-15 plug	Brown, blue, green w/yellow 18 AWG w/jacket (no plug)
Capacitor lead wire color, gauge	Black, black, 18 AWG	Red, red 18 AWG

## GENERAL DATA

Operating ambient temperature	10 to 40 °C	10 to 40 °C
Safety Certification	CUR	TUV
Net weight	16.0 lbs (7.3 kg)	15.0 lbs (6.8 kg)
Field service repair kit part number	SK2688T	SK2688T

## PRODUCT DIMENSIONS

**2688T Series**  
Dimensions: Inches [mm]



PUMP AND COMPRESSOR SOLUTIONS FOR OEMS WORLDWIDE

[gd-thomas.com](http://gd-thomas.com)



**Gardner Denver Thomas GmbH**

Livry-Gargan-Str. 10  
82256 Fürstfeldbruck  
Germany

T +49 8141 2280 0  
F +49 8141 8892136

[thomas.de@gardnerdenver.com](mailto:thomas.de@gardnerdenver.com)

**Gardner Denver Thomas Pneumatic Systems (Wuxi) Co. Ltd.**

1 New Dong'an Road, Shuofang Town  
Xinwu District, Wuxi  
Jiangsu, 214142 P.R. China

T +86 510 6878 2217  
F +86 510 6878 2200

[thomas.cn@gardnerdenver.com](mailto:thomas.cn@gardnerdenver.com)

**THOMAS**

by Gardner Denver

**Gardner Denver Thomas, Inc.**

1419 Illinois Avenue  
Sheboygan, WI 53081  
USA

T +1 920 4574891  
F +1 920 4514276

[td.usa@gardnerdenver.com](mailto:td.usa@gardnerdenver.com)

The information presented in this material is based on technical data and test results of nominal units. It is believed to be accurate and reliable and is offered as an aid to help in the selection of Thomas products. It is the responsibility of the user to determine the suitability of the product for the intended use and the user assumes all risk and liability in connection there with. Thomas does not warrant, guarantee or assume any obligation or liability in connection with this information.

Models presented in this catalog are representative of the product family. Photos of products pictured in this catalog do not necessarily represent a specific model number. To obtain further information for custom options, contact your local Thomas office.

Printed in U.S.A Form No. 850-3316 09/2018 ©Gardner Denver Thomas, Inc. All rights reserved.