

668 Series

THOMAS
by Gardner Denver

FEATURES

- > Custom configured part options
- > Oil-less operation
- > Permanently lubricated bearings
- > Stainless steel valves
- > Die-cast aluminum components
- > Dynamically balanced
- > Proven WOB-L® technology
- > Field service capability
- > Thermally protected motor
- > Designed and tested per Agency standards
- > UL or TUV approved
- > RoHS compliant

Declaration documentation available upon request

TYPICAL APPLICATIONS

- > Beverage Dispensing
- > Food Preparation & Dispensing
- > Business Equipment
- > Industrial/Manufacturing Equipment

BASE MODELS

668E44XNTLSXX

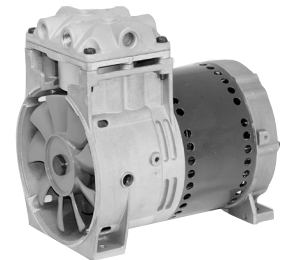
(115/60/1)

668N44XNTLSXX

(220-240/50/60/1)

668S44XNTLSXX

(100/50/60/1)



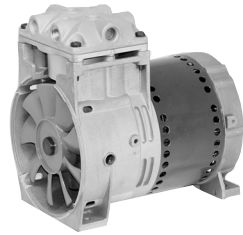
WOB-L®

668 Series

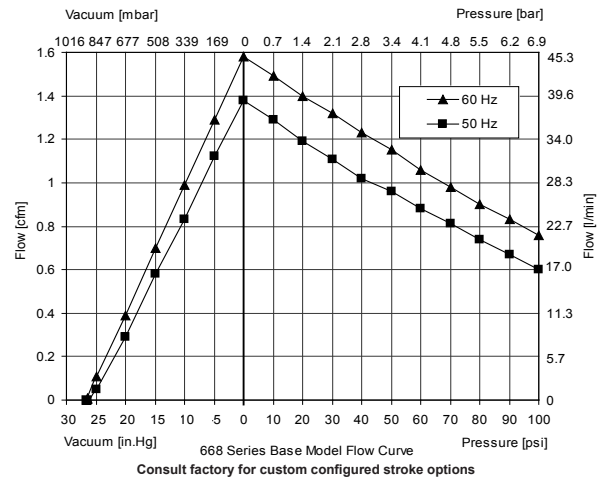
Flow	1.6 cfm (45.3 l/min)
Max. pressure	100 psi (6.9 bar)
Max. vacuum	93% local barometer

CONFIGURED OPTIONS

- > Stroke
- > Pump restart
- > Head port thread
- > Foot tap thread
- > Electrical cord
- > Fan guard
- > Protective cotating



Note: Supplied capacitor mounted remotely



NOTE: All test values are nominal and for reference only. They are not guaranteed maximum or minimum limits, nor do they imply mean or median values.

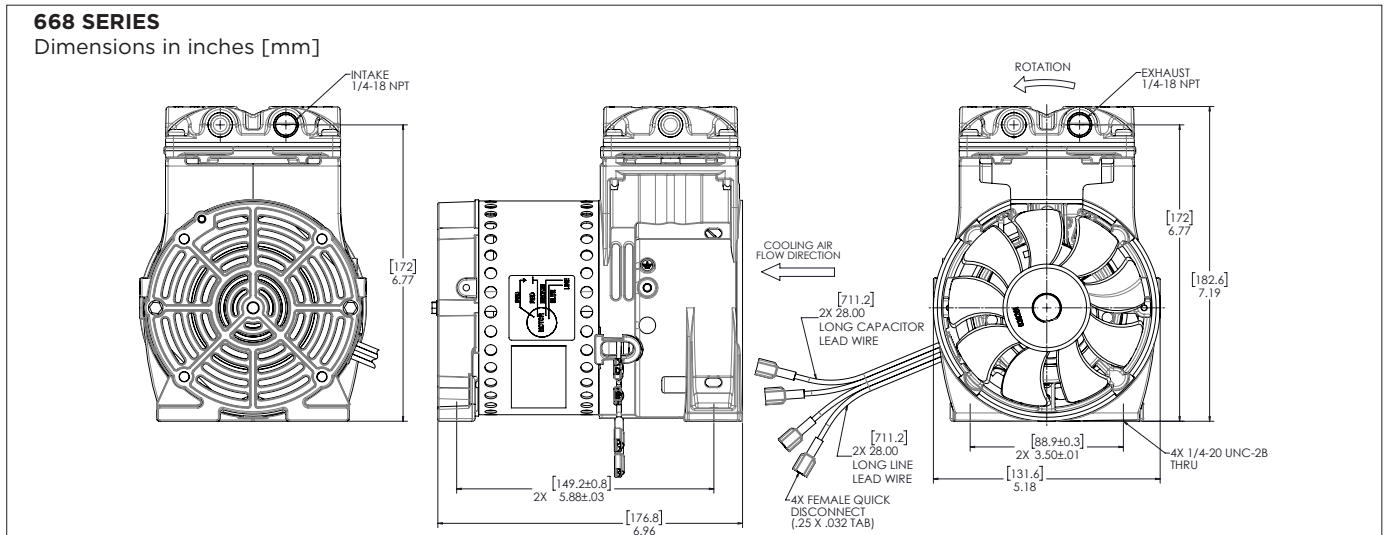
PERFORMANCE DATA	T12-0115	T10-0141		T10-0139	
Model Number	668E44XNTLSXX	668N44XNTLSXX		668S44XNTLSXX	
Head Configuration	Pressure/vacuum parallel flow	Pressure/vacuum parallel flow		Pressure/vacuum parallel flow	
Stroke	0.44 in. (11.2 mm)	0.44 in. (11.2 mm)		0.44 in. (11.2 mm)	
Nominal voltage input	115/60/1	230/50/1	230/60/1	100/50/1	100/60/1
Max. open air flow	1.6 cfm (45.3 l/min)	1.4 cfm (39.6 l/min)	1.6 cfm (45.3 l/min)	1.4 cfm (39.6 l/min)	1.6 cfm (45.3 l/min)
Max. rated pressure	100 psi (6.9 bar)	100 psi (6.9 bar)	100 psi (6.9 bar)	100 psi (6.9 bar)	100 psi (6.9 bar)
Current at rated pressure	3.3A	1.6A	1.2A	4.7A	2.9A
Power at rated pressure	309W	326W	268W	335W	272W
Speed at rated pressure	1729 rpm	1355 rpm	1690 rpm	1398 rpm	1712 rpm
Max. pressure restart	Consult factory	Consult factory		Consult factory	
Max. vacuum	93% local barometer	93% local barometer		93% local barometer	
Max. vacuum restart	Consult factory	Consult factory		Consult factory	

ELECTRICAL DATA	T12-0115		T10-0141		T10-0139	
Motor type (Capacitance)	P.S.C. [15 µF]		P.S.C. [8 µF]		P.S.C. [15 µF]	
Motor locked rotor current	12.0A		4.4A	4.0A	12.0A	11.0A
Motor insulation class	B		B		B	
Thermal switch (Open temperature)	Yes [293°F (145°C)]		Yes [275°F (135°C)]		Yes [293°F (145°C)]	
Lead wire color, gauge	Brown(hot), blue(neutral), 18 AWG		Brown(hot), blue(neutral), 18 AWG		Brown(hot), blue(neutral), 18 AWG	
Capacitor lead wire color, gauge	Red,red, 18 AWG		Red, red, 18 AWG		Red, red, 18 AWG	

GENERAL DATA	T12-0115	T10-0141	T10-0139
Operating ambient temperature	50° to 104°F (10°C TO 40°C)*	50° to 104°F (10°C TO 40°C)*	50° to 104°F (10°C TO 40°C)*
Safety Certification	cRUus	TUV	None
Net weight	13.3 lbs (6.0 kg)	13.3 lbs (6.0 kg)	13.3 lbs (6.0 kg)
Service Kit	SK668	SK668	SK668

*Broader ambient operating ranges may be possible depending on your specific application. Please consult factory regarding your particular system needs.

PRODUCT DIMENSIONS



PUMP AND COMPRESSOR SOLUTIONS FOR OEMS WORLDWIDE

gd-thomas.com



Gardner Denver Thomas GmbH

Livry-Gargan-Str. 10
82256 Fürstentfeldbruck
Germany
T +49 8141 2280 0
F +49 8141 8892136

thomas.de@gardnerdenver.com

Gardner Denver Thomas Pneumatic Systems (Wuxi) Co. Ltd.

1 New Dong'an Road, Suofang Town
Xinwu District, Wuxi
Jiangsu, 214142 P.R. China
T +86 510 6878 2217
F +86 510 6878 2200

thomas.cn@gardnerdenver.com

THOMAS

by Gardner Denver

Gardner Denver Thomas, Inc.

1419 Illinois Avenue
Sheboygan, WI 53081
USA
T +1 920 4574891
F +1 920 4514276

td.usa@gardnerdenver.com

The information presented in this material is based on technical data and test results of nominal units. It is believed to be accurate and reliable and is offered as an aid to help in the selection of Thomas products. It is the responsibility of the user to determine the suitability of the product for the intended use and the user assumes all risk and liability in connection there with. Thomas does not warrant, guarantee or assume any obligation or liability in connection with this information.

Models presented in this catalog are representative of the product family. Photos of products pictured in this catalog do not necessarily represent a specific model number. To obtain further information for custom options, contact your local Thomas office.

Printed in U.S.A Form No. 850-4004 09/2018 © Gardner Denver Thomas, Inc. All rights reserved.